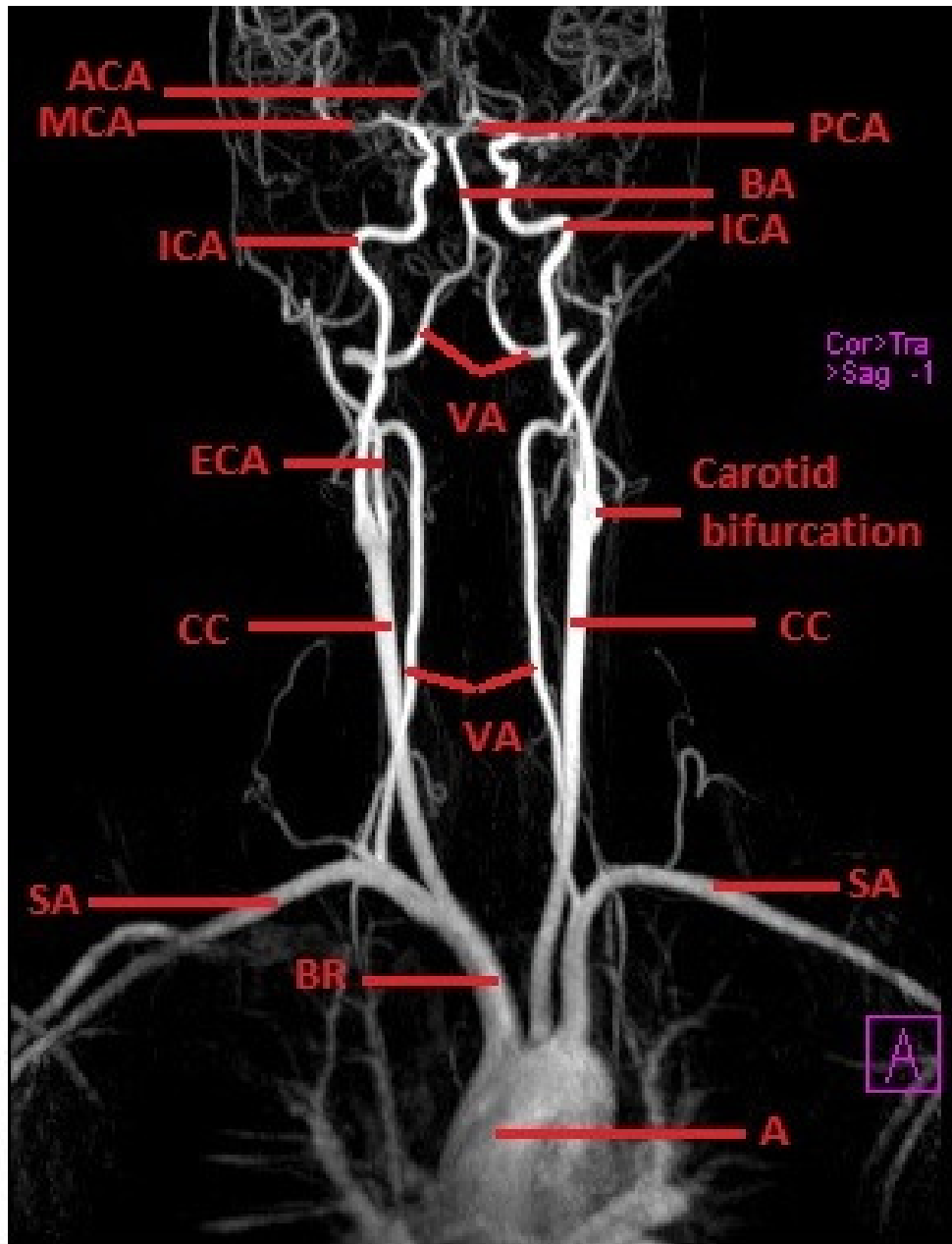
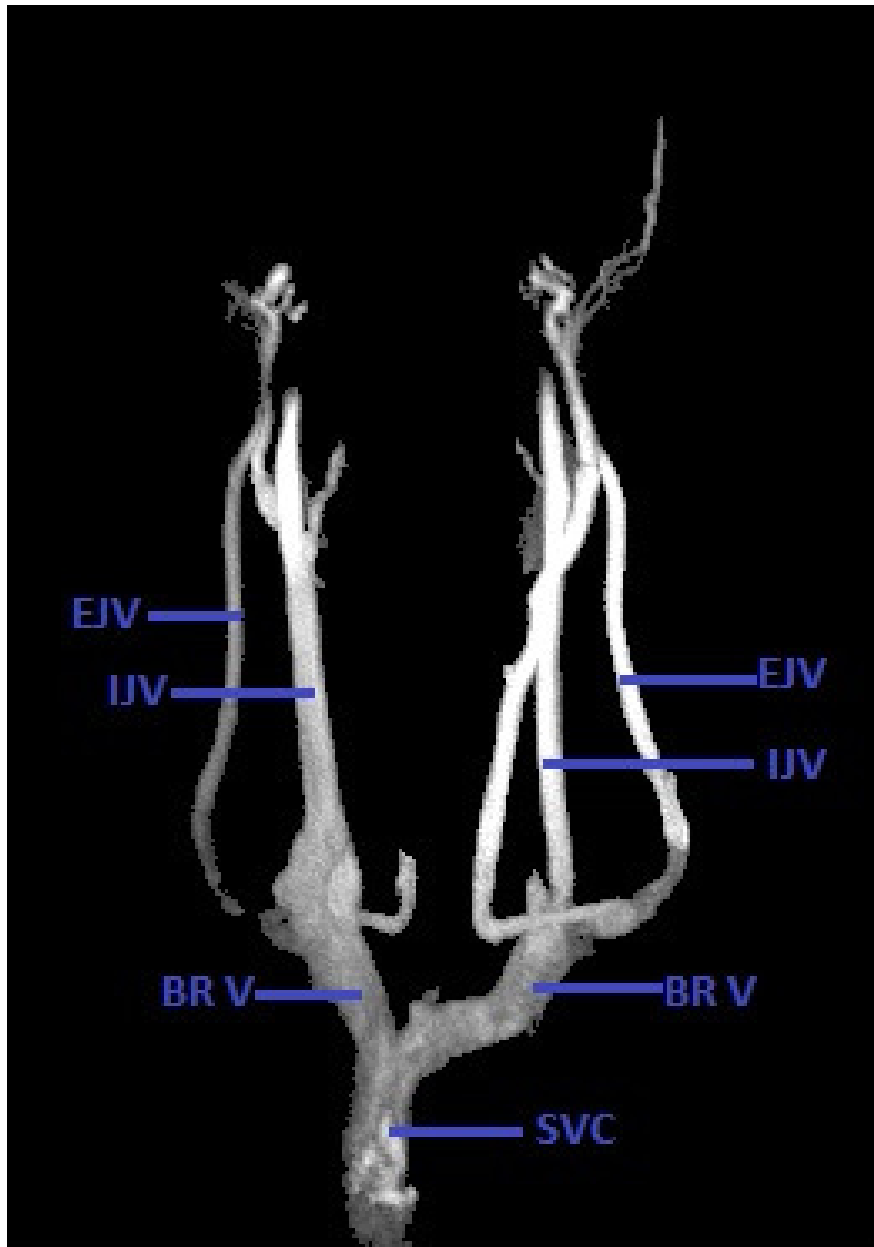


- TS- transverse sinus
- IJV-internal jugular vein
- EJV-external jugular vein
- PVP- perivertebral venous plexus
- TV- thyroid vein
- BR- brachiocephalic vein
- SV- subclavian vein
- SVC- superior vena cava
- CC- common carotid artery
- SA- subclavian artery
- BRA- brachiocephalic trunk
- A- aorta



- VA- vertebral artery
- ICA- internal carotid artery
- BA- basilar artery
- PCA- posterior cerebral artery
- MCA- middle cerebral artery
- ACA- anterior cerebral artery
- CC- common carotid artery
- SA- subclavian artery
- BR- brachiocephalic trunk
- A- aortic arch
- ECA- external carotid artery



- EJV- external jugular vein
- IJV- internal jugular vein
- BRV- brachiocephalic vein
- SVC- superior vena cava